

Why Central HR System User Management Solution

With our solution, we enable you to perform the coordination between the Human Resources and Information Processing Departments in a fast and integrated structure.

We enable you to minimize human error in user management based on Personnels via SAP.

General Specialities of The Solution

Depending on the personnel entry/exit transactions made in the SAP Human Resources Module, we enable you to manage users in all systems from a central place.

We help you reset the additional costs that may arise in licensing by revealing users with different IDs in different systems.

Detailed Access

For detailed information and to benefit from our service, you can [contact us](#) via the contact link.

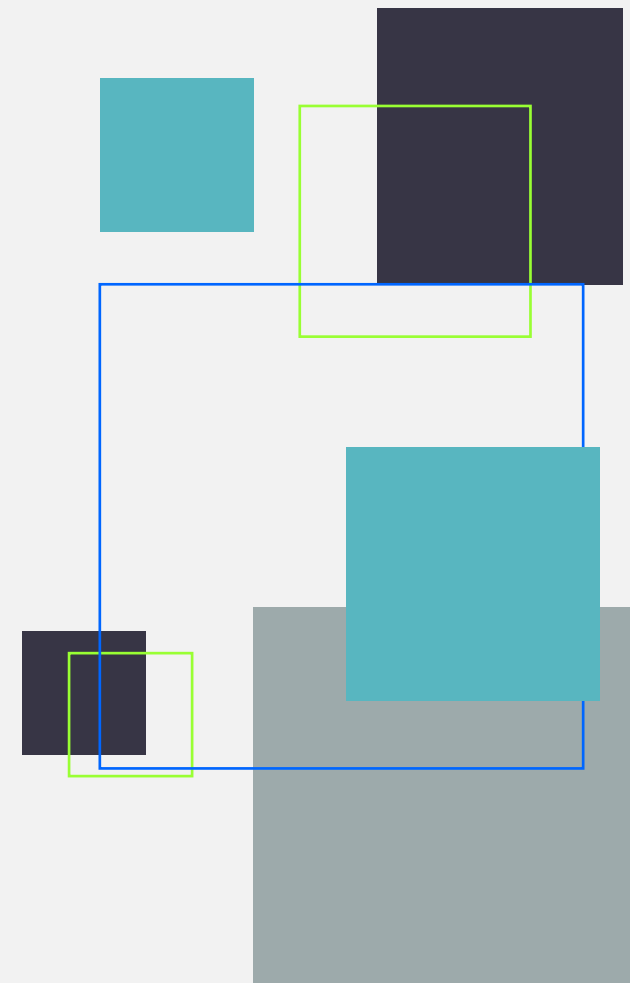
Rapidsol Central HR System User Management Solution

We enable you to configure it in a simple way by performing individual user operations in each system from a single system and upper unit.

Central HR System User Management Solution

Human Resources

Data Processing
Departments

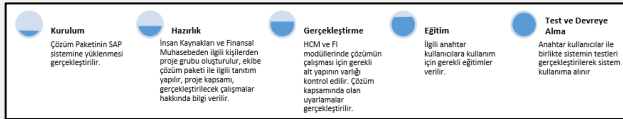


"Centralized user management.."



Setup and Carrying to Live

For the implementation of the solution package, a project management plan is created by our project management office, in which we can implement the fastest and healthiest application, and the studies briefly summarized below are carried out and the system is put into use.



Prerequisites

There are no prerequisites required for applications to be deployed. It is necessary to be a Fiori user only for Fiori reporting.

Control Cockpit

Thanks to the user-friendly Fiori screens, we enable the IT and Human Resources employees to focus their workload on more efficient points by making the "password reset", "unblock blocking or locked users" with their operations mobile platform easily.

